



Break the mould of
traditional ceilings

OWA



Classical styling – individual design freedom

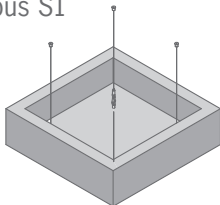
Corpus

Stylistically uncompromising, functional with a plethora of design options – these are the main distinguishing features of the OWAconsult collection. Corpus has now succeeded in expanding this freedom even further. Ultrafine, white, fleece-covered surfaces are interwoven seamlessly, thereby modelling the formal content and cohesion of the individual elements. That way, Corpus blends avant-garde freedom with classical styling, giving it its own, unmistakable impression. In addition there are the outstanding absorption properties of the individual elements, which ensure exemplary room acoustics, especially when they are combined.

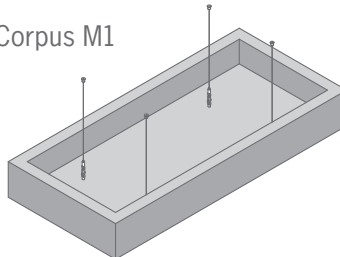


Visible side	Fleece, white
Edges	Fleece, white
Edge detail	Straight edges, all the way round
Sizes and weight	<p>Corpus S1: height 150 mm, dimension 520 x 520 mm, approx. 2.2 kg</p> <p>Corpus S2: height 300 mm, dimension 520 x 520 mm, approx. 3.4 kg</p> <p>Corpus M1: height 150 mm, dimension 1120 x 520 mm, approx. 4.1 kg</p> <p>Corpus M2: height 300 mm, dimension 1120 x 520 mm, approx. 6.0 kg</p> <p>Corpus L1: height 150 mm, dimension 1120 x 1120 mm, approx. 7.3 kg</p> <p>Corpus L2: height 300 mm, dimension 1120 x 1120 mm, approx. 9.9 kg</p> <p>Corpus XL1: height 150 mm, dimension 1120 x 1720 mm, approx. 10.6 kg</p> <p>Corpus XL2: height 300 mm, dimension 1120 x 1720 mm, approx. 13.8 kg</p> <p>Corpus XXL1: height 150 mm, dimension 1120 x 2320 mm, approx. 13.8 kg</p> <p>Corpus XXL2: height 300 mm, dimension 1120 x 2320 mm, approx. 17.8 kg</p>
Grid suspension	Incl. wire suspension, L = 1.5 m, ceiling fixation
Sound absorption	$a_w = 1.00$ /NRC = 1.00

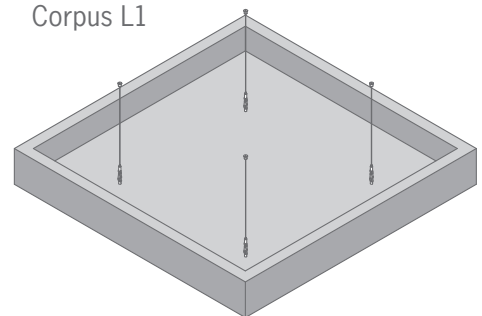
Corpus S1



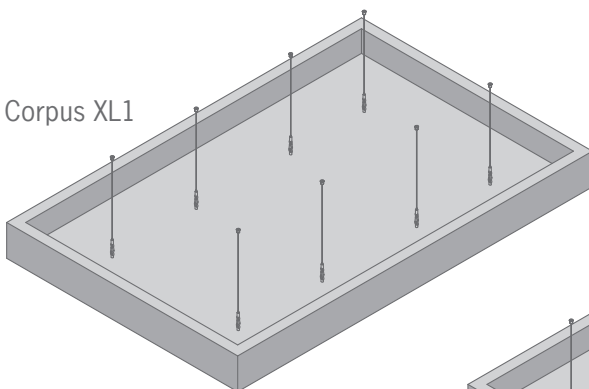
Corpus M1



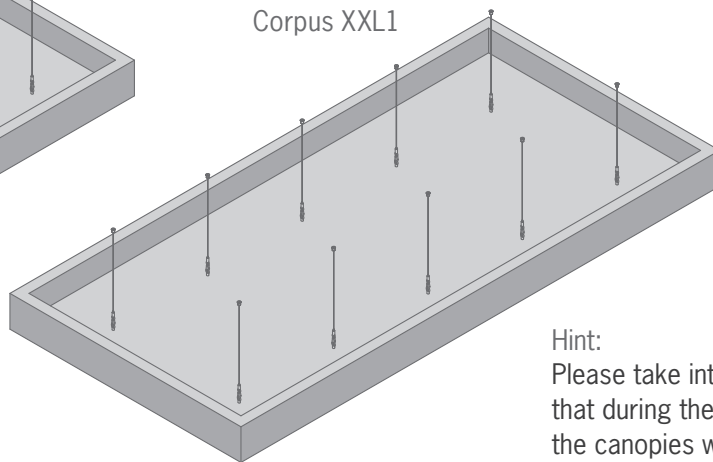
Corpus L1



Corpus XL1



Corpus XXL1



Hint:

Please take into consideration that during the installation of the canopies wind pressure or wind suction can occur. In these cases all relevant measures of protection have to be taken.

Further information see brochure 1019 e

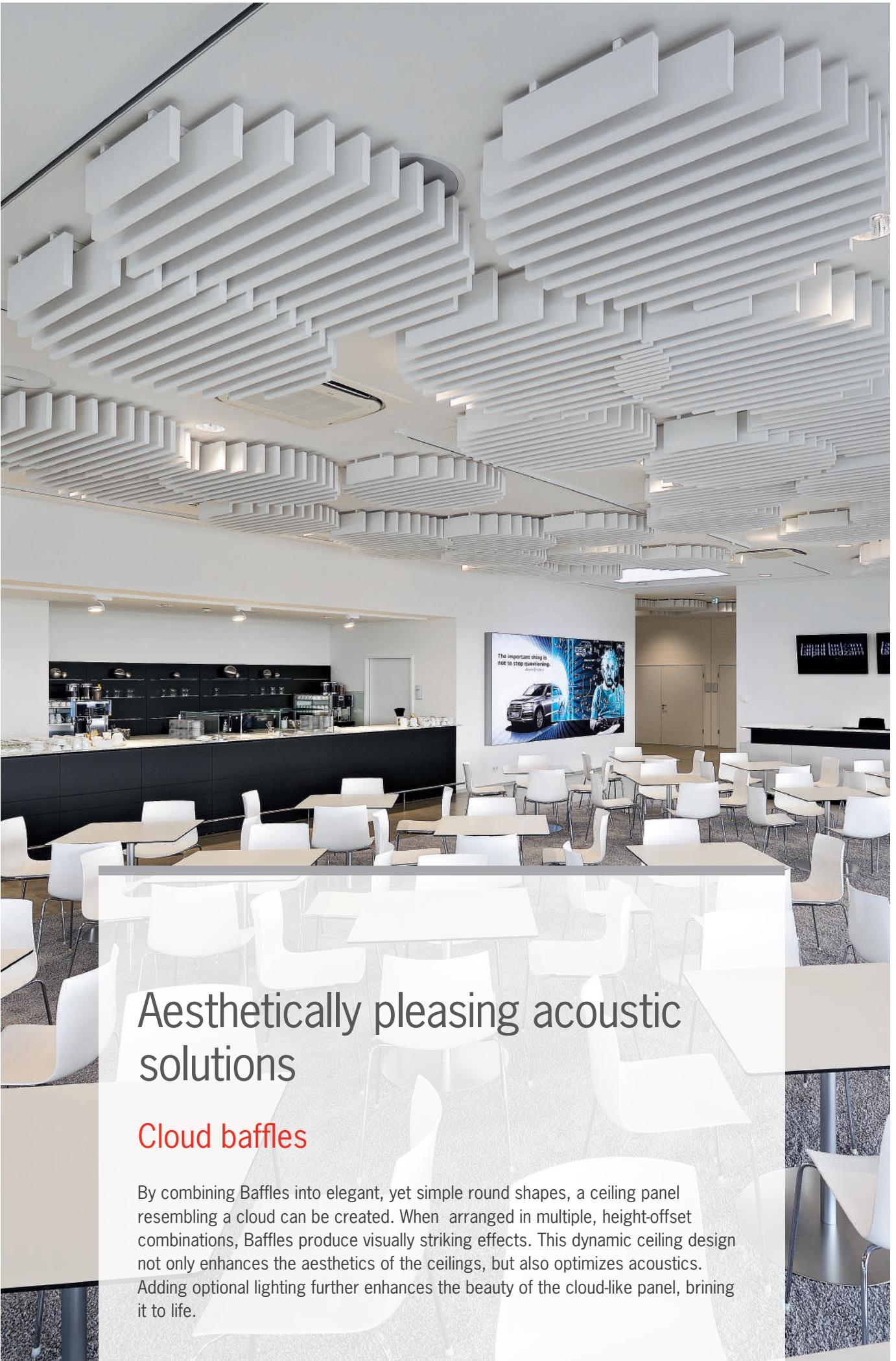


*Information sur le niveau d'émission de substances volatiles dans l'air intérieur, présentant un risque de toxicité par inhalation, sur une échelle de classe allant de A+ (très faibles émissions) à C (fortes émissions)



As from January 1st 2012 all construction, decoration and furnishing products are to be certified and labelled with an emission classification based on VOC tests. 'A' indicates low emissions.

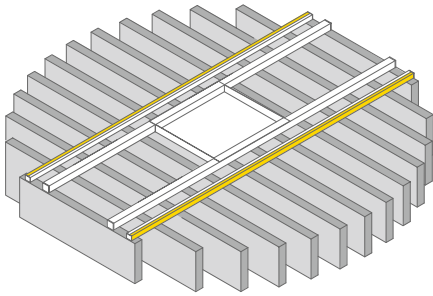
Blauer Engel (German for „Blue Angel“) ensures environmentally-friendly products.



Aesthetically pleasing acoustic solutions

Cloud baffles

By combining Baffles into elegant, yet simple round shapes, a ceiling panel resembling a cloud can be created. When arranged in multiple, height-offset combinations, Baffles produce visually striking effects. This dynamic ceiling design not only enhances the aesthetics of the ceilings, but also optimizes acoustics. Adding optional lighting further enhances the beauty of the cloud-like panel, bringing it to life.

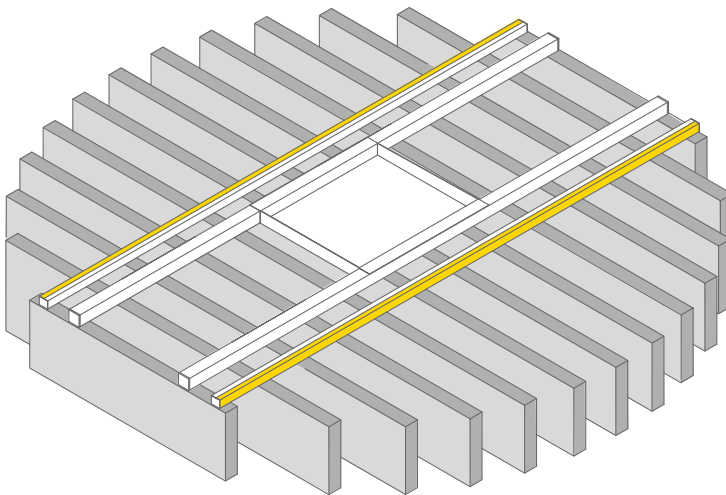


Visible side
Edges
Edge detail
Sound absorption

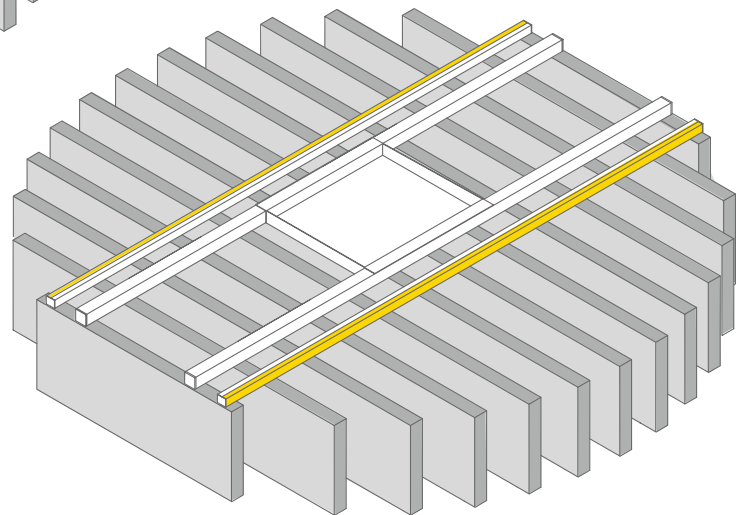
Fleece, white or coloured fabric
Fleece, white or coloured fabric
Straight edges, all the way round
 $a_w = 0.60 / \text{NRC} = 0.70$



Cloud 150



Cloud 200



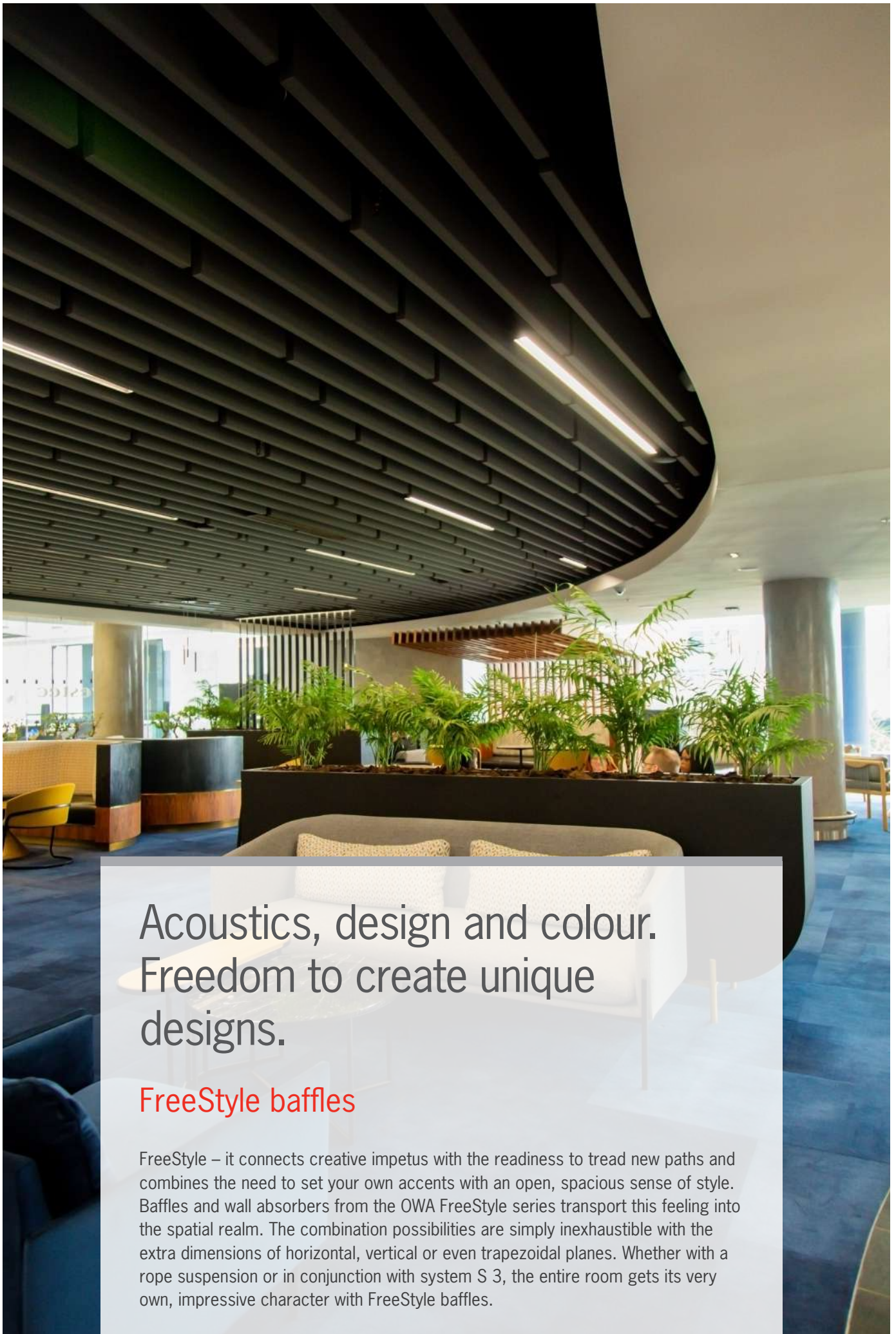
* Information sur le niveau d'émission de substances volatiles dans l'air intérieur, présentant un risque de toxicité par inhalation, sur une échelle de classe allant de A+ (très faibles émissions) à C (fortes émissions)



As from January 1st 2012 all construction, decoration and furnishing products are to be certified and labelled with an emission classification based on VOC tests. „A“ indicates low emissions.

Blauer Engel (German for „Blue Angel“) ensures environmentally-friendly products.

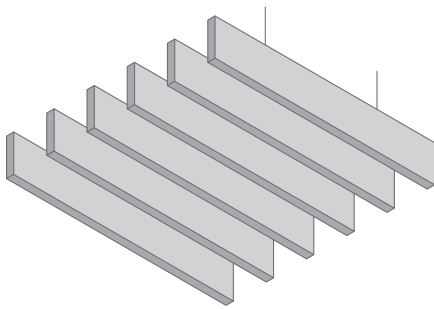
* Applies only to fleece, white



Acoustics, design and colour.
Freedom to create unique
designs.

FreeStyle baffles

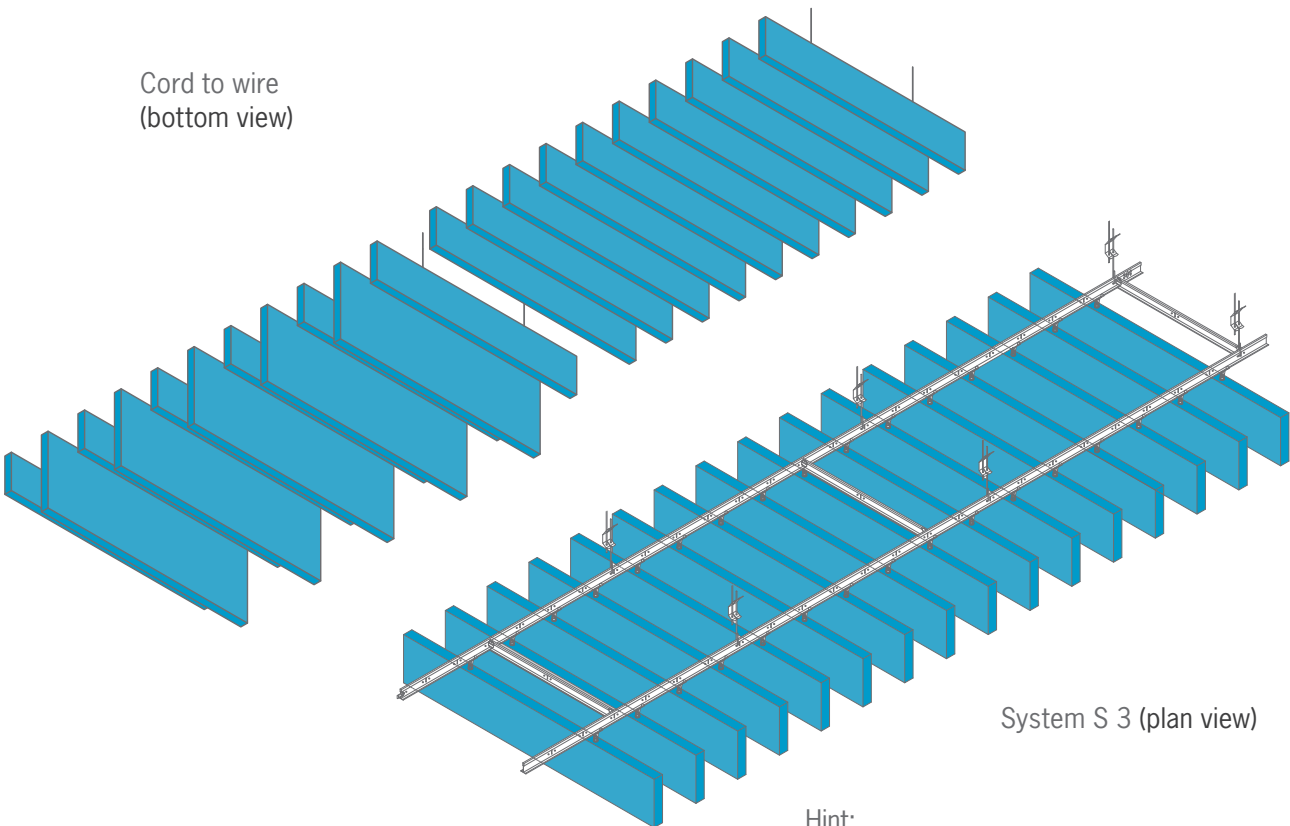
FreeStyle – it connects creative impetus with the readiness to tread new paths and combines the need to set your own accents with an open, spacious sense of style. Baffles and wall absorbers from the OWA FreeStyle series transport this feeling into the spatial realm. The combination possibilities are simply inexhaustible with the extra dimensions of horizontal, vertical or even trapezoidal planes. Whether with a rope suspension or in conjunction with system S 3, the entire room gets its very own, impressive character with FreeStyle baffles.



Visible side	Fleece, white or coloured fabric
Edges	Fleece, white or coloured fabric
Edge detail	Straight edges, all the way round
Size and weight	FreeStyle S: 1200 x 200 x 40 mm, approx. 1.3 kg FreeStyle S Plus: 1200 x 300 x 40 mm, approx. 2.0kg FreeStyle M: 1200 x 400 x 40 mm, approx. 2.6 kg FreeStyle L: 1200 x 600 x 40 mm, approx. 4.0 kg Special formats/special shapes on request.
Reaction to fire for fleece, white	A2-s1,d0 in accordance with EN 13501-1:2019-05
Grid suspension	Wire suspension: L = 1.5 m, ceiling fixation System S 3: suspension on main tee no. 45
Sound absorption	$a_w = 0.60/NRC = 0.70$



Cord to wire
(bottom view)



System S 3 (plan view)

Hint:

Please take into consideration that during the installation of the baffles wind pressure or wind suction can occur. In these cases all relevant measures of protection have to be taken.

Further information see brochure 1588 e



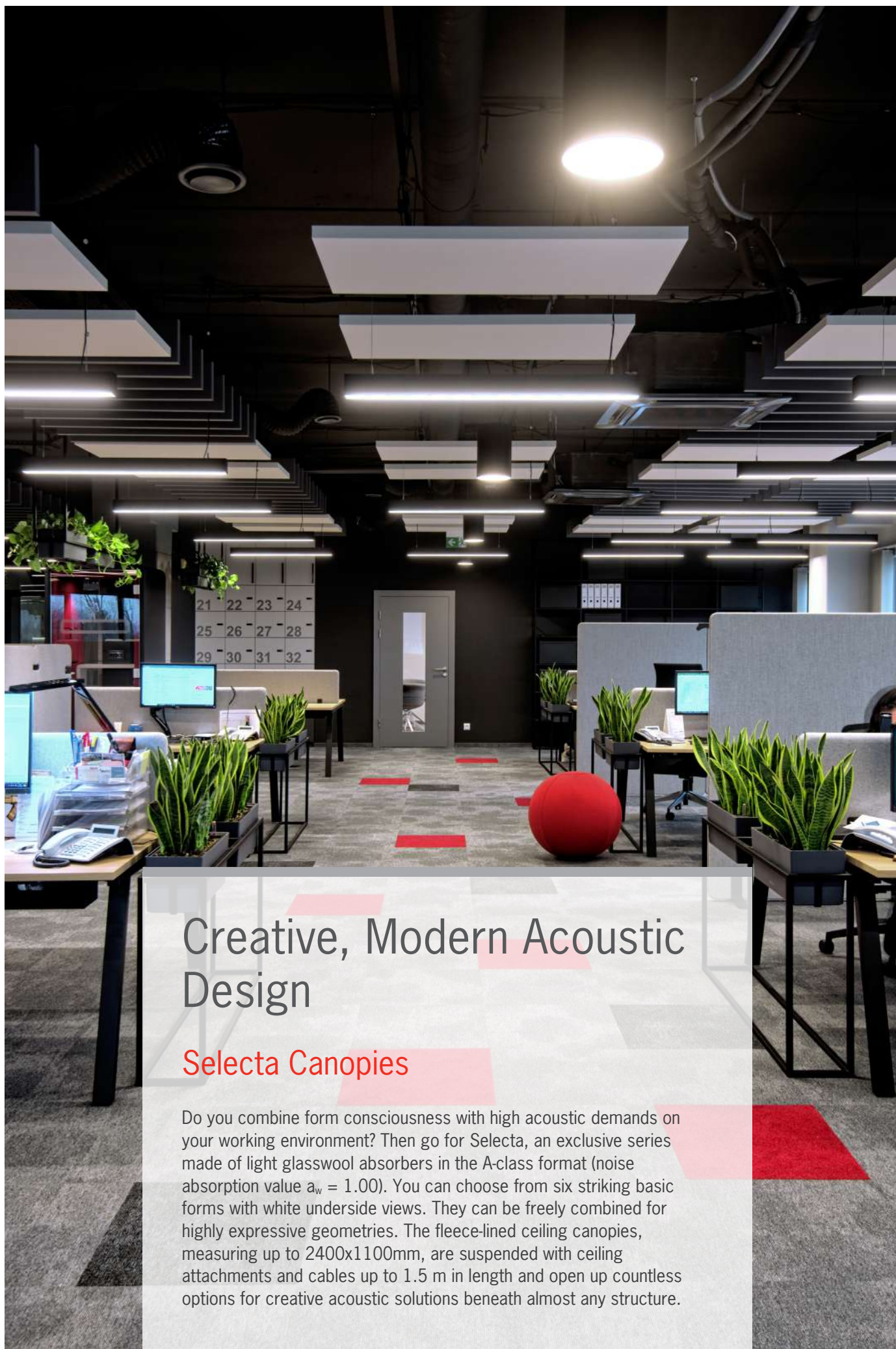
* Information sur le niveau d'émission de substances volatiles dans l'air intérieur, présentant un risque de toxicité par inhalation, sur une échelle de classe allant de A+ (très faibles émissions) à C (fortes émissions)



As from January 1st 2012 all construction, decoration and furnishing products are to be certified and labelled with an emission classification based on VOC tests. 'A' indicates low emissions.

Blauer Engel (German for „Blue Angel“) ensures environmentally-friendly products.

* Applies only to fleece, white



Creative, Modern Acoustic Design

Selecta Canopies

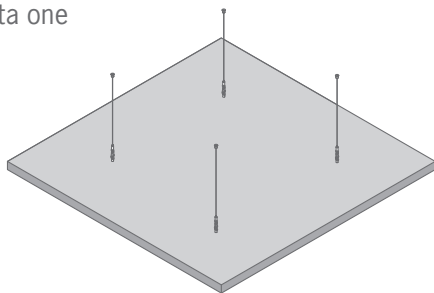
Do you combine form consciousness with high acoustic demands on your working environment? Then go for Selecta, an exclusive series made of light glasswool absorbers in the A-class format (noise absorption value $a_w = 1.00$). You can choose from six striking basic forms with white underside views. They can be freely combined for highly expressive geometries. The fleece-lined ceiling canopies, measuring up to 2400x1100mm, are suspended with ceiling attachments and cables up to 1.5 m in length and open up countless options for creative acoustic solutions beneath almost any structure.



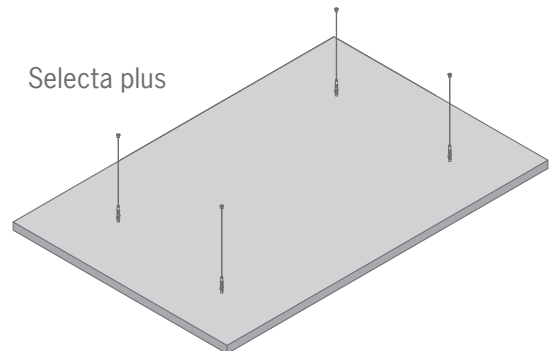
Visible side	Fleece, white or coloured fabric
Edges	Fleece, white or coloured fabric
Edge detail	Straight edges, all the way round
Size and weight	<i>Selecta one</i> : 1100 x 1100 x 40 mm, approx. 6.2 kg <i>Selecta plus</i> : 1800 x 1100 x 40 mm, approx. 9.3 kg <i>Selecta grande</i> : 2400 x 1100 x 40 mm, approx. 12.4 kg <i>Selecta loop</i> : 1100 x 40 mm, approx. 5.75 kg
	Special formats/special shapes on request.
Reaction to fire for fleece, white	A2-s1,d0 in accordance with EN 13501-1:2019-05
Grid suspension	Incl. wire suspension, L = 1.5 m, ceiling fixation
Sound absorption	$a_w = 1.00 / \text{NRC} = 0.95$



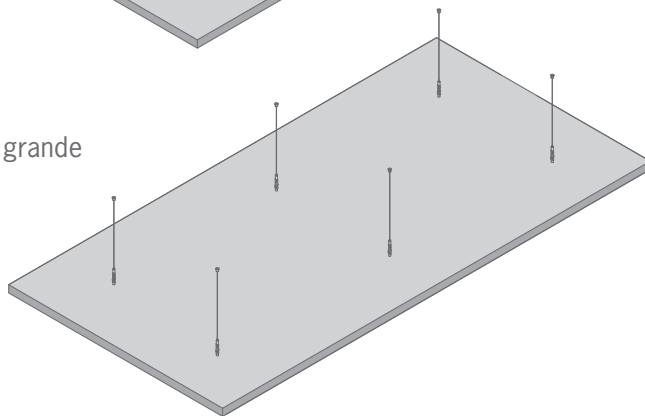
Selecta one



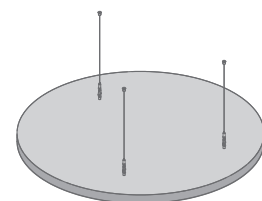
Selecta plus



Selecta grande



Selecta loop



Hint:

Please take into consideration that during the installation of the canopies wind pressure or wind suction can occur. In these cases all relevant measures of protection have to be taken.

Further information



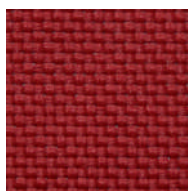
* Information sur le niveau d'émission de substances volatiles dans l'air intérieur, présentant un risque de toxicité par inhalation, sur une échelle de classe allant de A+ (très faibles émissions) à C (fortes émissions)



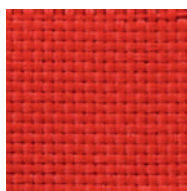
As from January 1st 2012 all construction, decoration and furnishing products are to be certified and labelled with an emission classification based on VOC tests. „A“ indicates low emissions.

Blauer Engel (German for „Blue Angel“) ensures environmentally-friendly products.

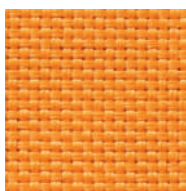
* Applies only to fleece, white



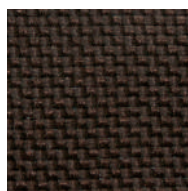
52826 | Dark red



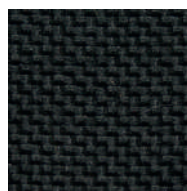
52827 | Red



52828 | Orange



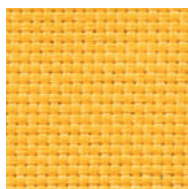
52829 | Dark brown



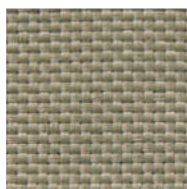
52830 | Black



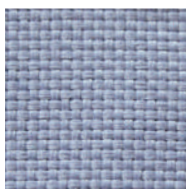
52831 | Dark grey



52832 | Yellow



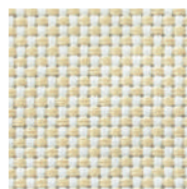
52833 | Green-grey



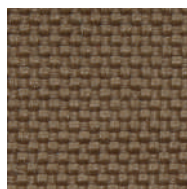
52834 | Light grey



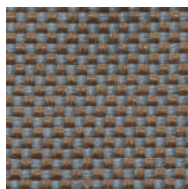
52835 | White



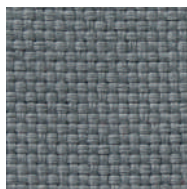
52836 | Light beige



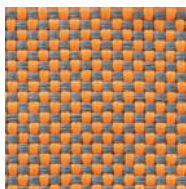
52837 | Medium brown



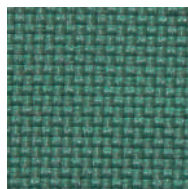
52838 | Mottled brown



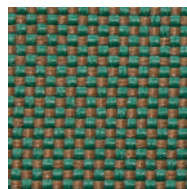
52839 | Grey



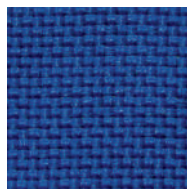
52840 | Mottled orange



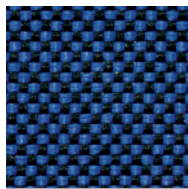
52841 | Petrol



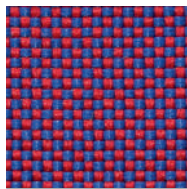
52842 | Mottled green



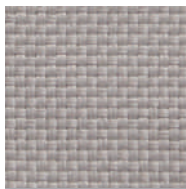
52843 | Blue



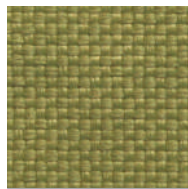
52844 | Midnight blue



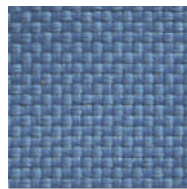
52845 | Violet



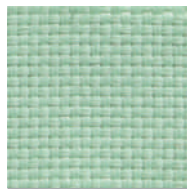
55244 | Stone grey



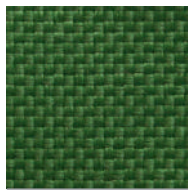
55245 | Olive green



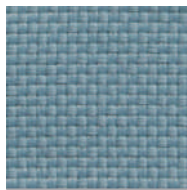
55246 | Light blue



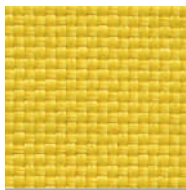
55247 | Mint green



55248 | Dark green



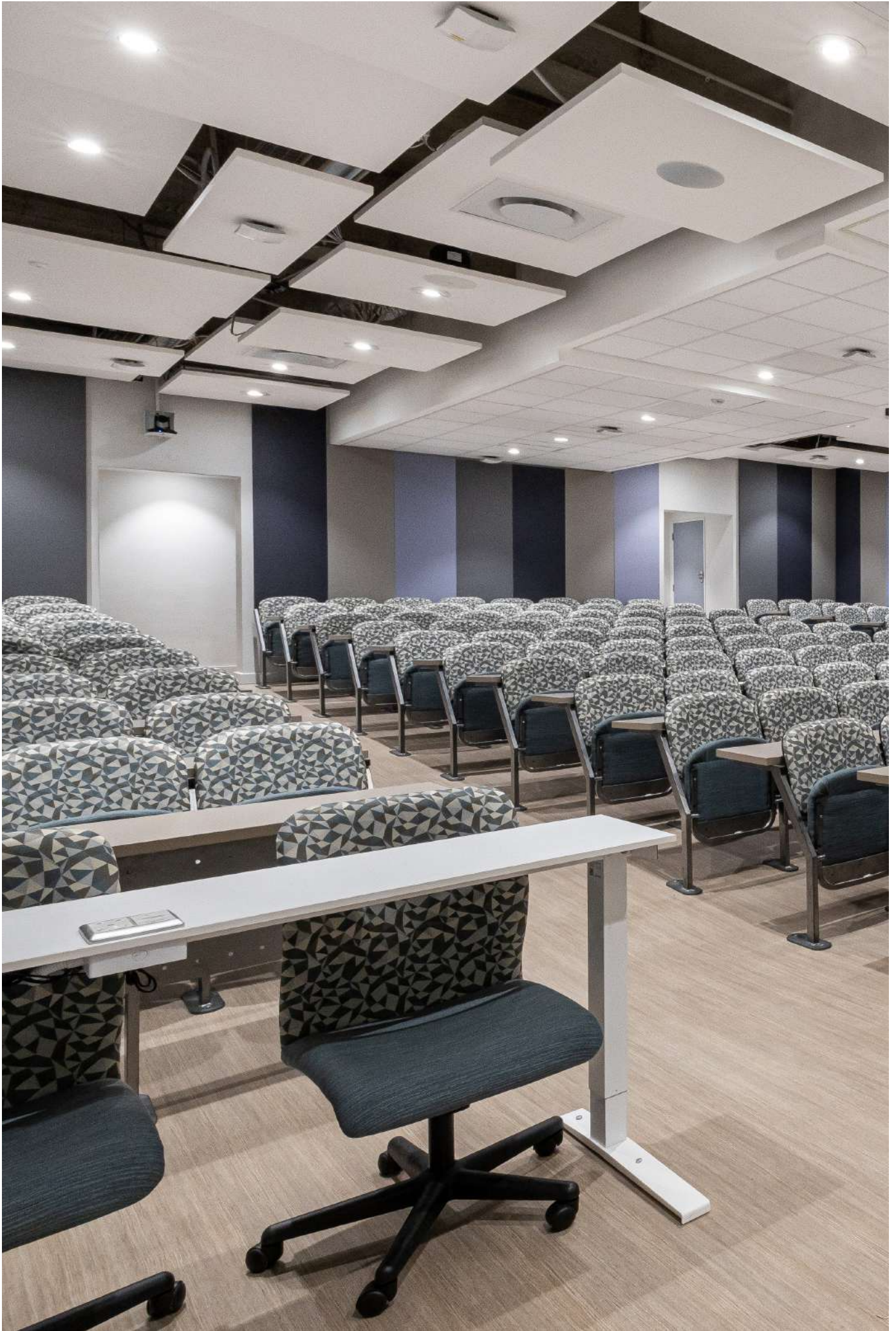
55249 | Grey-blue

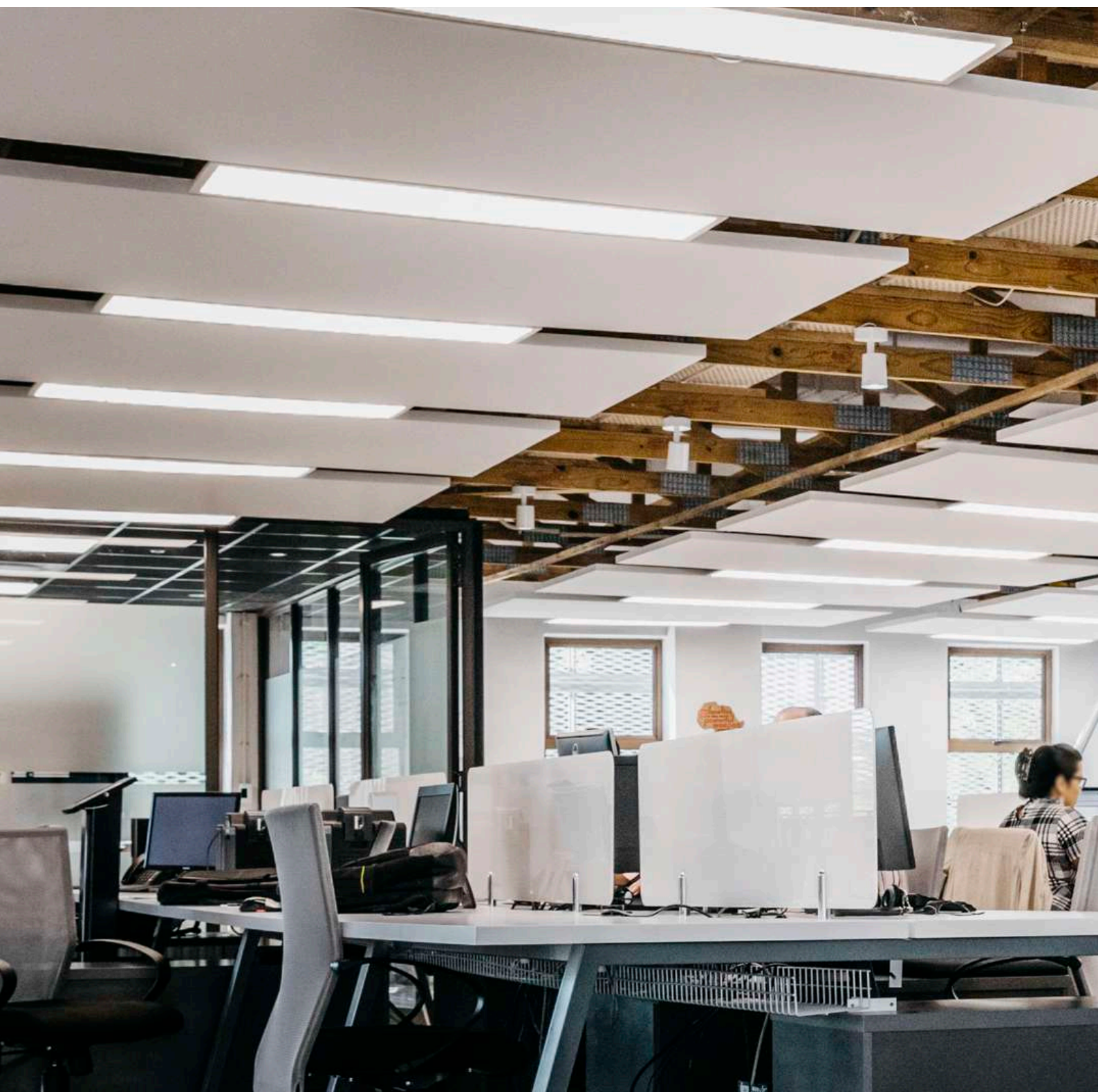


55250 | Light yellow

Technical specifications

Composition	100 % polyester, FR ATY yarn
Weave	Panama
Weight	320 g/m ²
Width	1500 mm (+/- 50 mm)





The information in this brochure is up-to-date at the time of publication. Errors and mistakes excepted. Please contact our competence team OWAconsult for specific advice. Our experts will be happy to answer your questions under the following contact details:



Johannesburg

OWA Southern Africa
19 Fourth Street, Wynberg 2090
tel 011 786 5762 | yvette@owa.co.za
www.owa.co.za

Cape Town

OWA Ceiling Systems Cape
76 Gunners Circle, Epping 1, 7460
tel 021 531 7511 | info@owacape.co.za
www.owa.co.za

Durban

OWA Southern Africa
22 Brickworks Way, Briardene, 4051
tel 031 564 8726 | veronika@owa.co.za
www.owa.co.za